

Test Yourself Page 2

5. What is the mean and median of this set of numbers?

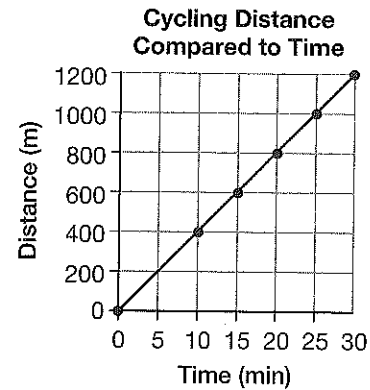
5, 13, 9, 15, 8

- A. 10 and 13 B. 5 and 9 C. 10 and 11 D. 10 and 9

6. Katrina timed the distance she cycled each day.

What would the graph look like if she decreased the value of each unit on the vertical scale?

- A. The graph would look more flat.
 B. The graph would go down more suddenly.
 C. The graph would go up more suddenly.
 D. The graph would look the same.



7. Clive made a Carroll diagram to sort the numbers from 1 to 20.

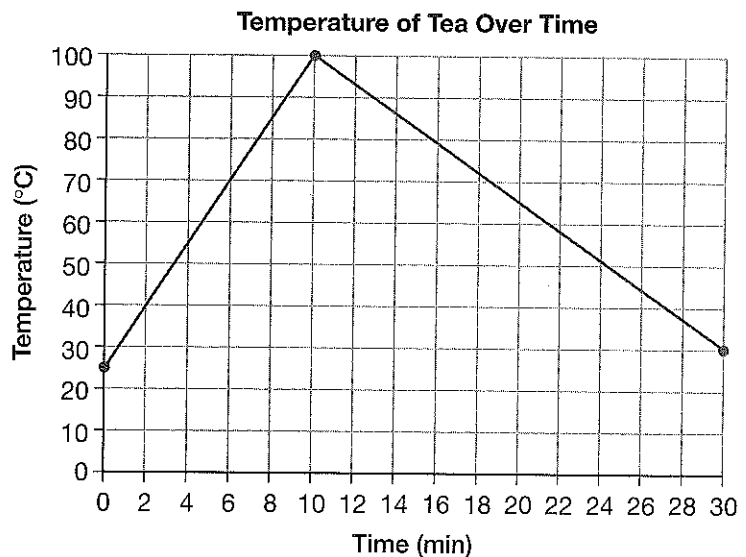
What labels are missing in each column?

	?	?
Less than or equal to 10	4, 8	1, 2, 3, 5, 6, 7, 9, 10
Greater than 10	12, 16, 20	11, 13, 14, 15, 17, 18, 19

- A. Even numbers, Odd numbers
 B. Multiples of 2, Not multiples of 2
 C. Multiples of 3, Not multiples of 3
 D. Multiples of 4, Not multiples of 4

8. Teresa boiled some water for tea, then poured the tea and let it cool down. When did Teresa stop heating the water?

- A. from 0 min to 10 min
 B. at 10 min
 C. from 10 min to 30 min
 D. from 0 min to 30 min



Test Yourself Page 2

5. What is the mean and median of this set of numbers?

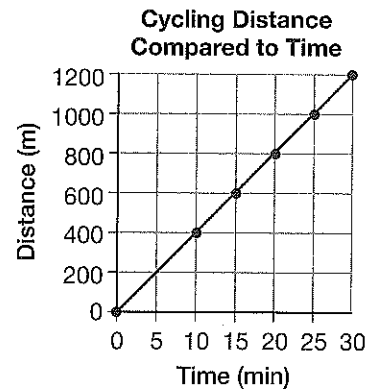
5, 13, 9, 15, 8

- A. 10 and 13 B. 5 and 9 C. 10 and 11 D. 10 and 9

6. Katrina timed the distance she cycled each day.

What would the graph look like if she decreased the value of each unit on the vertical scale?

- A. The graph would look more flat.
 B. The graph would go down more suddenly.
 C. The graph would go up more suddenly.
 D. The graph would look the same.



7. Clive made a Carroll diagram to sort the numbers from 1 to 20.

What labels are missing in each column?

	?	?
Less than or equal to 10	4, 8	1, 2, 3, 5, 6, 7, 9, 10
Greater than 10	12, 16, 20	11, 13, 14, 15, 17, 18, 19

- A. Even numbers, Odd numbers
 B. Multiples of 2, Not multiples of 2
 C. Multiples of 3, Not multiples of 3
 D. Multiples of 4, Not multiples of 4

8. Teresa boiled some water for tea, then poured the tea and let it cool down. When did Teresa stop heating the water?

- A. from 0 min to 10 min
 B. at 10 min
 C. from 10 min to 30 min
 D. from 0 min to 30 min

